

Ruwac USA Industrial Vacuums

DS2 Series

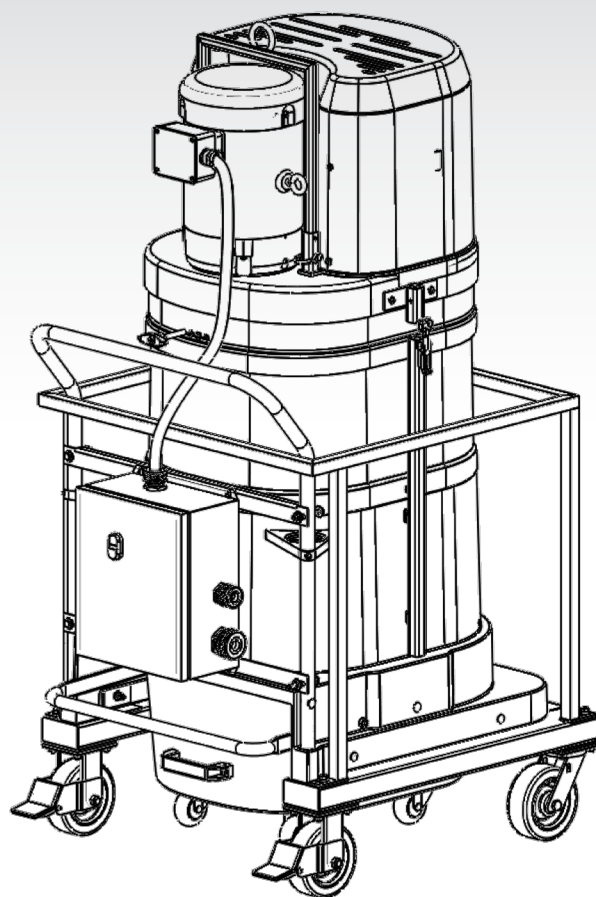
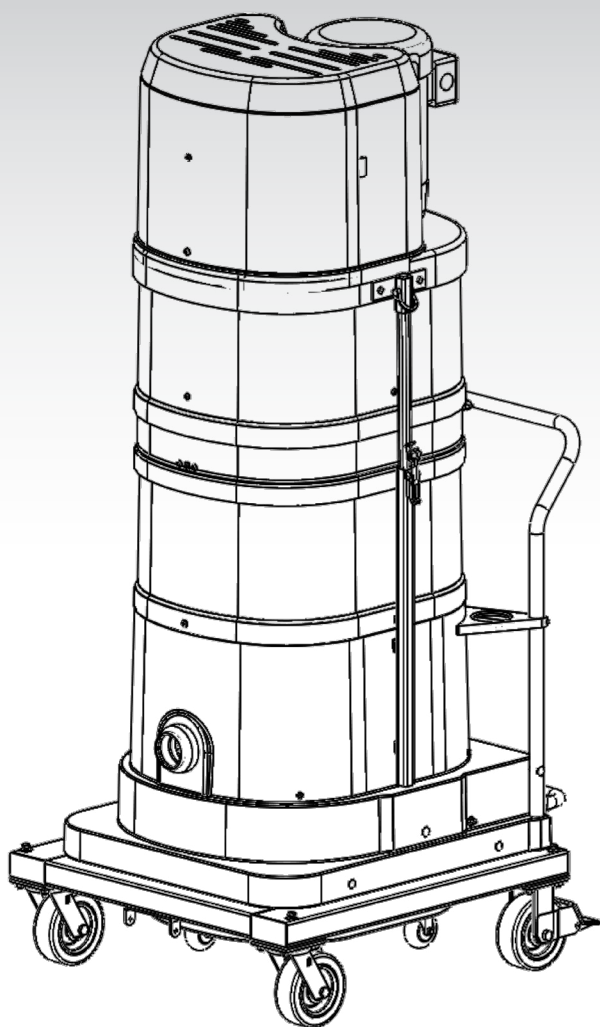
Parts Manual

Model No.

Serial No.

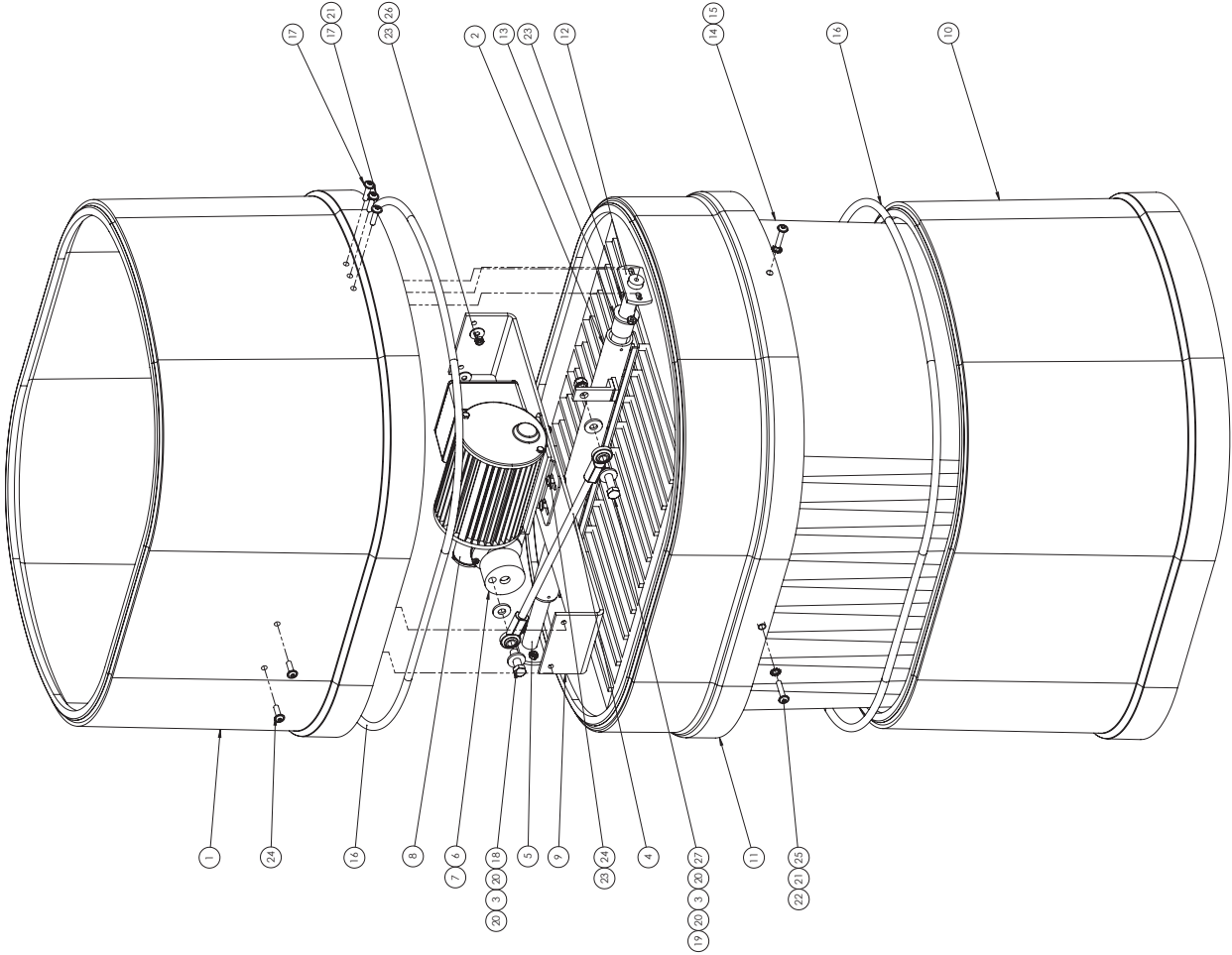
Filter No.

Start-Up Date



Version: 2.0

REV	DESCRIPTION	DATE	NAME
01	CREATED DOCUMENTATION, UPDATED EVO PER ECO 1162	12/29/15	DJE



ITEM NO.	PART NO.	DESCRIPTION	DRAWING NO.	QTY.
1	3285004	HOUSING SPACER, MOTORIZED SHAKER, D2, LARGE	000 G 007/5 US	1
2	35141001	FILTER CAGE, 4.5M, D52, MOTORIZED SHAKER	000 F 008/5 US	1
3	34610	Roll Joint End, Female, 3/8" x 24		2
4	92876	THREADED ROD, 3/8" x 24		1
5	21360	SLIDE BAR FOR D2 SHAKER		1
6	22384000	SHEAVE, OFFSET FOR SHAKER MOTOR		1
7	200010	SCREW SET # 10-32 X .25 LG ZINC		1
8	9555C	FILTER SHAKER MOTOR		1
9	3285005	SPACER, MOTOR MOUNT		1
10	3285003	D52, 1.5 LG, HOUSING SPACER, BULK		1
11	32801000	HOUSING SPACER, D2, SMALL, BLACK		1
12	21345	D2 FILTER PLATE	000 F 008/2 US	2
13	31892000	BURNING, BRASS, 20X26X.50MM		2
14	32970	FILTER, .48 SQ/FT PTFE		1
15	32970F	FILTER INSERT, 4.5M		10
16	313778	GASKET, NITRIL SPONGE FOR HOUSING SPACERS, 0.350IN X .150IN		2
17	3481701	SCREW, SOC BH, FLANGED, M4-25		6
18	37505	BOLT, HEX, 3/8-16 X 1 1/4"		1
19	37506	LOCK NUT, 3/8-16		4
20	31205	FLAT WASHER, 5/16		1
21	25000	WASHER EXT STAR 1/4"		6
22	34817A	M6 BLIND FEA		4
23	34817	M6 LOCK NUT		12
24	34817	SCREW, US SOC HD M6 X 20		8
25	21464	SCREW, M6 X 30 SOC HD, FLANGED		4
26	34819	WASHER FENDER M6		4
27	37537	BOLT, HEX, 3/8-16 X 1 1/2"		1

DATE	NAME	DATE	NAME
12/29/15	DJE	12/29/15	DJE

DATE	NAME	DATE	NAME
12/29/15	DJE	12/29/15	DJE

DATE	NAME	DATE	NAME
12/29/15	DJE	12/29/15	DJE

DATE	NAME	DATE	NAME
12/29/15	DJE	12/29/15	DJE

DATE	NAME	DATE	NAME
12/29/15	DJE	12/29/15	DJE

DATE	NAME	DATE	NAME
12/29/15	DJE	12/29/15	DJE

DATE	NAME	DATE	NAME
12/29/15	DJE	12/29/15	DJE

DATE	NAME	DATE	NAME
12/29/15	DJE	12/29/15	DJE

DATE	NAME	DATE	NAME
12/29/15	DJE	12/29/15	DJE

DATE	NAME	DATE	NAME
12/29/15	DJE	12/29/15	DJE

DATE	NAME	DATE	NAME
12/29/15	DJE	12/29/15	DJE

DATE	NAME	DATE	NAME
12/29/15	DJE	12/29/15	DJE

DATE	NAME	DATE	NAME
12/29/15	DJE	12/29/15	DJE

DATE	NAME	DATE	NAME
12/29/15	DJE	12/29/15	DJE

DATE	NAME	DATE	NAME
12/29/15	DJE	12/29/15	DJE

DATE	NAME	DATE	NAME
12/29/15	DJE	12/29/15	DJE

DATE	NAME	DATE	NAME
12/29/15	DJE	12/29/15	DJE

DATE	NAME	DATE	NAME
12/29/15	DJE	12/29/15	DJE

DATE	NAME	DATE	NAME
12/29/15	DJE	12/29/15	DJE

DATE	NAME	DATE	NAME
12/29/15	DJE	12/29/15	DJE

DATE	NAME	DATE	NAME
12/29/15	DJE	12/29/15	DJE

DATE	NAME	DATE	NAME
12/29/15	DJE	12/29/15	DJE

DATE	NAME	DATE	NAME
12/29/15	DJE	12/29/15	DJE

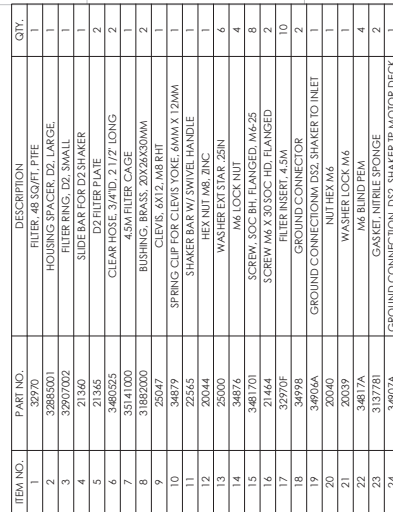
DATE	NAME	DATE	NAME
12/29/15	DJE	12/29/15	DJE

DATE	NAME	DATE	NAME
12/29/15	DJE	12/29/15	DJE

DATE	NAME	DATE	NAME
12/29/15	DJE	12/29/15	DJE

DATE	NAME	DATE	NAME
12/29/15	DJE	12/29/15	DJE

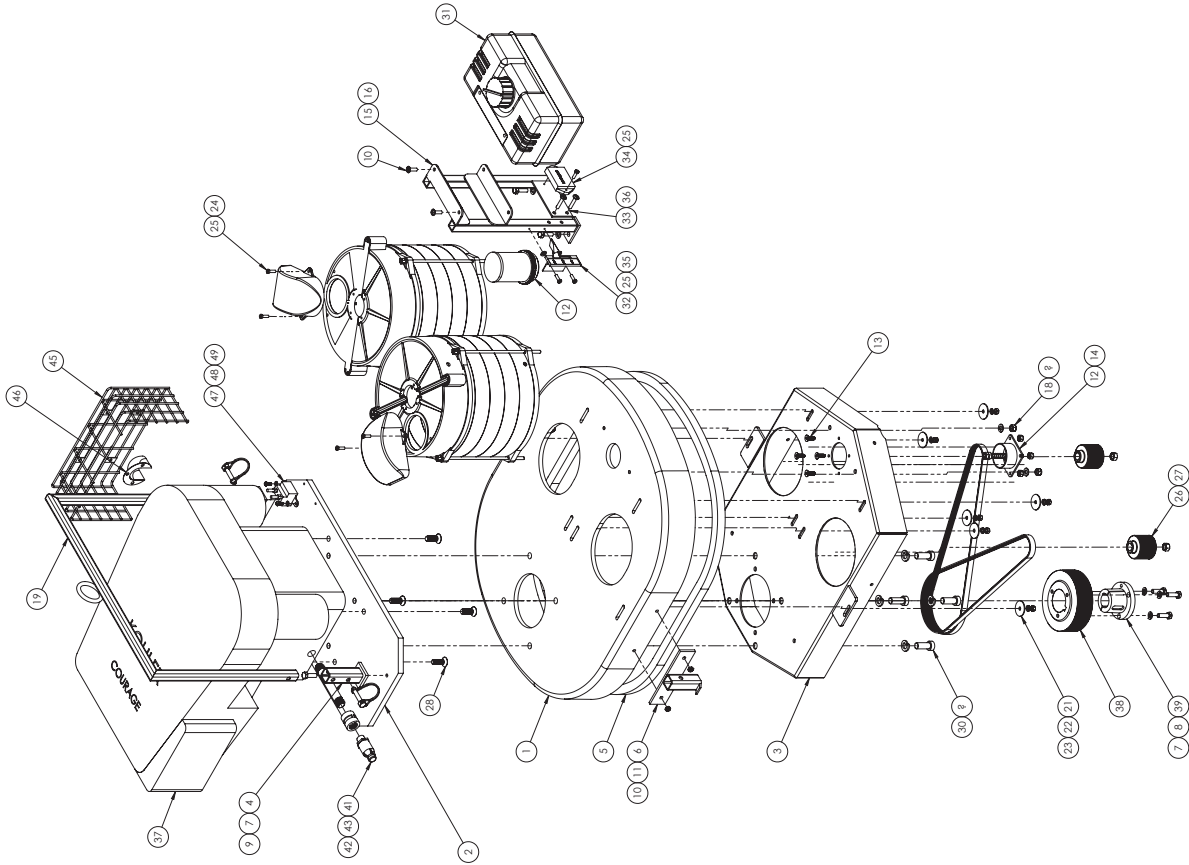
THE INFORMATION CONTAINED HEREIN IS UNCLASSIFIED EXCEPT WHERE SHOWN OTHERWISE BY THE MARKING.		DATE 10/07/87		BY 10/07/87		REASON FOR DECLASSIFICATION		DATE		BY	
1007-107		1007-107		1007-107		1007-107		1007-107		1007-107	
1007-107		1007-107		1007-107		1007-107		1007-107		1007-107	
1007-107		1007-107		1007-107		1007-107		1007-107		1007-107	
1007-107		1007-107		1007-107		1007-107		1007-107		1007-107	
1007-107		1007-107		1007-107		1007-107		1007-107		1007-107	
1007-107		1007-107		1007-107		1007-107		1007-107		1007-107	
1007-107		1007-107		1007-107		1007-107		1007-107		1007-107	
1007-107		1007-107		1007-107		1007-107		1007-107		1007-107	
1007-107		1007-107		1007-107		1007-107		1007-107		1007-107	
1007-107		1007-107		1007-107		1007-107		1007-107		1007-107	
1007-107		1007-107		1007-107		1007-107		1007-107		1007-107	
1007-107		1007-107		1007-107		1007-107		1007-107		1007-107	
1007-107		1007-107		1007-107		1007-107		1007-107		1007-107	
1007-107		1007-107		1007-107		1007-107		1007-107		1007-107	
1007-107		1007-107		1007-107		1007-107		1007-107		1007-107	
1007-107		1007-107		1007-107		1007-107		1007-107		1007-107	
1007-107		1007-107		1007-107		1007-107		1007-107		1007-107	
1007-107		1007-107		1007-107		1007-107		1007-107		1007-107	
1007-107		1007-107		1007-107		1007-107		1007-107		1007-107	
1007-107		1007-107		1007-107		1007-107		1007-107		1007-107	
1007-107		1007-107		1007-107		1007-107		1007-107		1007-107	
1007-107		1007-107		1007-107		1007-107		1007-107		1007-107	
1007-107		1007-107		1007-107		1007-107		1007-107		1007-107	
1007-107		1007-107		1007-107		1007-107		1007-107		1007-107	
1007-107		1007-107		1007-107		1007-107		1007-107		1007-107	
1007-107		1007-107		1007-107		1007-107		1007-107		1007-107	
1007-107		1007-107		1007-107		1007-107		1007-107		1007-107	
1007-107		1007-107		1007-107		1007-107		1007-107		1007-107	
1007-107		1007-107		1007-107		1007-107		1007-107		1007-107	
1007-107		1007-107		1007-107		1007-107		1007-107		1007-107	
1007-107		1007-107		1007-107		1007-107		1007-107		1007-107	
1007-107		1007-107		1007-107		1007-107		1007-107		1007-107	
1007-107		1007-107		1007-107		1007-107		1007-107		1007-107	
1007-107		1007-107		1007-107		1007-107		1007-107		1007-107	
1007-107		1007-107		1007-107		1007-107		1007-107		1007-107	
1007-107		1007-107		1007-107		1007-107		1007-107		1007-107	
1007-107		1007-107		1007-107		1007-107		1007-107		1007-107	
1007-107		1007-107		1007-107		1007-107		1007-107		1007-107	
1007-107		1007-107		1007-107		1007-107		1007-107		1007-107	
1007-107		1007-107		1007-107		1007-107		1007-107		1007-107	
1007-107		1007-107		1007-107		1007-107		1007-107		1007-107	
1007-107		1007-107		1007-107		1007-107		1007-107		1007-107	
1007-107		1007-107		1007-107		1007-107		1007-107		1007-107	
1007-107		1007-107		1007-107		1007-107		1007-107		1007-107	
1007-107		1007-107		1007-107		1007-107		1007-107		1007-107	
1007-107		1007-107		1007-107		1007-107		1007-107		1007-107	
1007-107		1007-107		1007-107		1007-107		1007-107		1007-107	
1007-107		1007-107		1007-107		1007-107		1007-107		1007-107	
1007-107		1007-107		1007-107		1007-107		1007-107		1007-107	
1007-107		1007-107		1007-107		1007-107		1007-107		1007-107	
1007-107		1007-107		1007-107		1007-107		1007-107		1007-107	
1007-107		1007-107		1007-107		1007-107		1007-107		1007-107	
1007-107		1007-107		1007-107		1007-107		1007-107		1007-107	
1007-107		1007-107		1007-107		1007-107		1007-107		1007-107	
1007-107		1007-107		1007-107		1007-107		1007-107		1007-107	
1007-107		1007-107		1007-107		1007-107		1007-107		1007-107	
1007-107		1007-107		1007-107		1007-107		1007-107		1007-107	
1007-107		1007-107		1007-107		1007-107		1007-107		1007-107	
1007-107		1007-107		1007-107		1007-107		1007-107		1007-107	
1007-107		1007-107		1007-107		1007-107		1007-107		1007-107	
1007-107		1007-107		1007-107		1007-107		1007-107		1007-107	
1007-107		1007-107		1007-107		1007-107		1007-107		1007-107	
1007-107		1007-107		1007-107		1007-107		1007-107		1007-107	
1007-107		1007-107		1007-107		1007-107		1007-107		1007-107	
1007-107		1007-107		1007-107		1007-107		1007-107		1007-107	
1007-107		1007-107		1007-107		1007-107</					

[illegible]

[illegible]

[illegible]

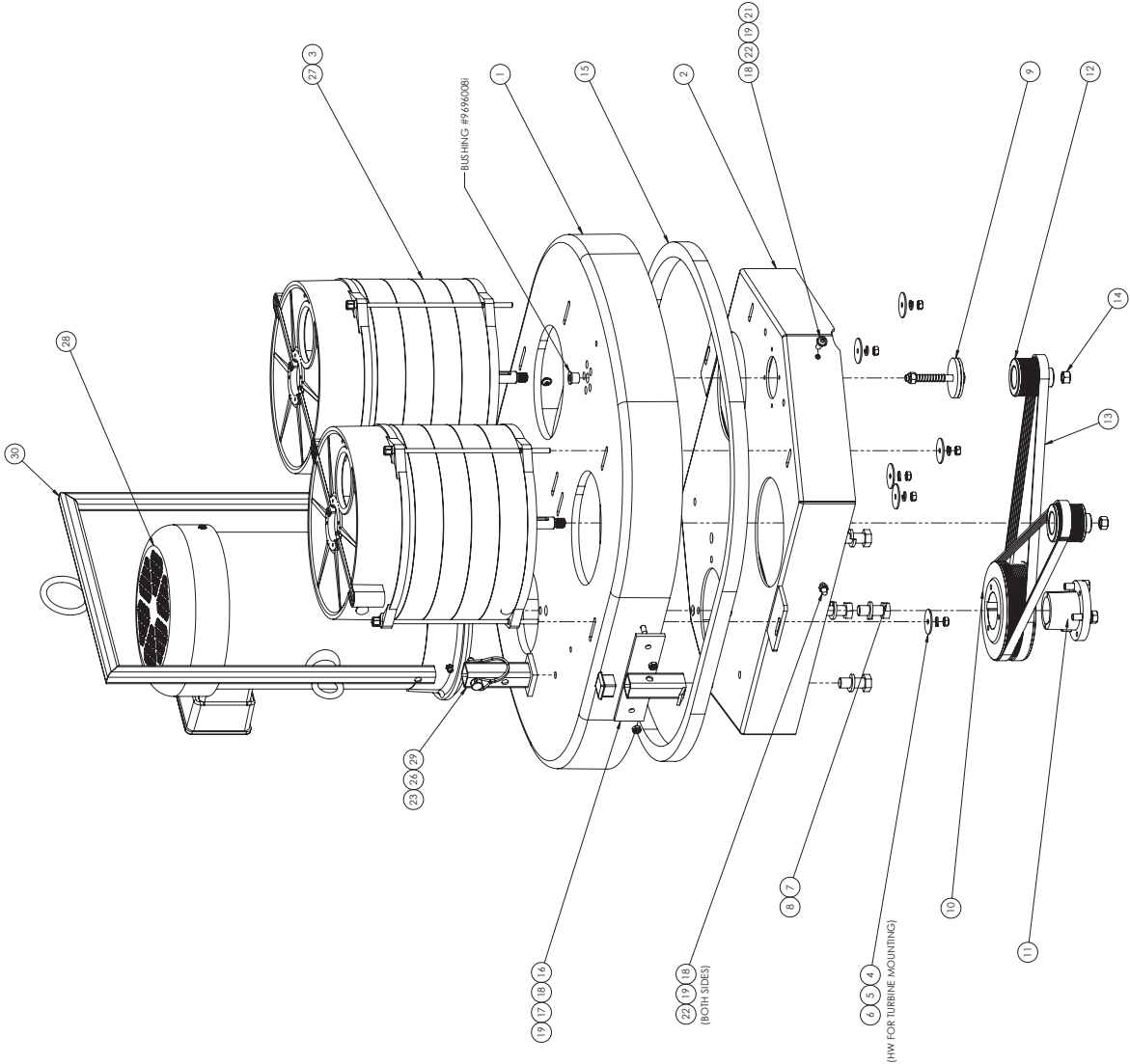
REVISION		DATE	NAME
1	DESCRIPTION		
2			
3			
4			
5			
6			
7			
8			



ITEM NO.	PART NO.	DESCRIPTION	DRAWING NO.	QTY.
1	32871001	DS2 MOTOR DECK-REV A	000 M 0223 US	1
2	3181202	GAS MOTOR ADAPTER PLATE	990 A 0003 US-REV A	1
3	32880000	SUPPORT PLATE, MOTOR DECK	000 R 0392 US	1
4	60210C	DECK MOUNT WELDMENT		1
5	32955	DS2 MOTORDECK GASKET 78"	990 R 0034 US	1
6	60211C	CLAMP HOOK WELDMENT, MOTOR DECK		1
7	31210	HEX BOLT 5/16-18, 11LG		5
8	31206	WASHER LOCK 5/16		5
9	25029	RETAINER PIN		2
10	34817	SCREW US 30C HD M6 X 20		2
11	34876	M6 LOCK NUT		4
12	102201A	PRESSURE RELIEF VALVE WITH COVER		1
13	250312	SCREW SOC PH 1/4-20 X 3/4		4
14	250312	SCREW SOC PH 1/4-20 X 3/4		4
15	2501309P	GAS TANK BRACKET	000 R 0330 US-REV C	1
16	25054	ROTI HEX M8 X 25		2
17	25061	M6 FLAT WASHER		4
18	30069	NUT LOCK M6		2
19	602100	REMOVABLE LIFTING BAR, DS2/GV		1
20	22221	TURBINE, 5 STAGE, 4.0 KW		2
21	20031	WASHER, FENDER, 1/4X 1 1/4		6
22	20039	WASHER LOCK M6		6
23	20040	NUT HEX M6		6
24	32856	EXHAUST DEFLECTOR, TURBINE		2
25	32865	SCREW, SLOT, CH, M5 X 1.6		8
26	33058	PULLEY, POLY-V, 14 GROOVE, 48MM DIA		2
27	32827	NUT, HEX, LH, M12, 1 3/4"		2
28	215561	M10X30 PH SOC		4
29	32841	BOLT, SOC, 1/2-13 X 1 1/4		4
30	50002	WASHER, LOCK 1/2"		4
31	250138	FUEL TANK		1
32	25013C	THROTTLE CONTROL		1
33	2501309 J2	HOURLY METER BRACKET	000 R 0330 US-REV C	1
34	2501309 E	HOURLY METER		1
35	25067	WASHER FLAT M6		2
36	21464	SCREW M6 X 30 SOC HD, FLANGED		2
37	25013	KOHLER COURAGE 15 HP MOTOR		1
38	329230US	125MM SHEAVE, 14 GROOVE		1
39	3305001US	BUSHING, PI, 1"		1
40	35015	BELT, 3501, 4 GROOVE, POLY-V		2
41	97061	DRAIN VALVE OIL		1
42	2006234	NIPPLE, FULL, 3/8NPT X 4.5 IG		1
43	61025	COUPLING, FULL, 3/8NPT BRASS		1
44	2501309MM	KOHLER MUFFLER		1
45	2501309MM	MUFFLER GUARD		1
46	2501309D	EXHAUST DEFLECTOR		1
47	250138	KOHLER SOLENOID		1
48	32955	WASHER LOCK 1/2"		2
49	32955	WASHER LOCK 1/2"		2
50	2509801	GASKET ROUND, 3/8", CUT AT 18 425"		1

DRAWING NO. 990 E 0029 US SCALE: 1/8" = 1'-0"		SHEET 1 OF 1	
TITLE: KOHLER COURAGE SIZE: 25013A18		REV: 1	
DRAWING NO. 990 E 0029 US SCALE: 1/8" = 1'-0"		SHEET 1 OF 1	

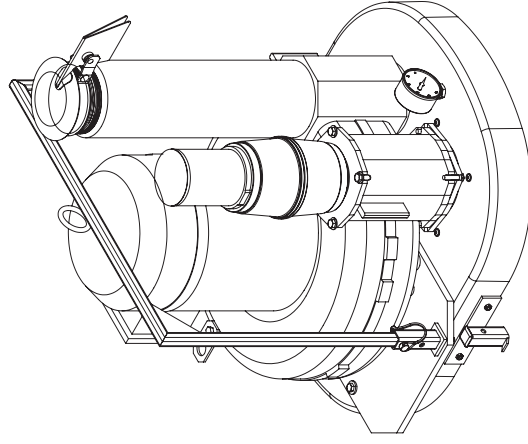
REV	DESCRIPTION	DATE	NAME



ITEM NO.	PART NO.	DESCRIPTION	DRAWING NO.	QTY.
1	32971001	D52 MOTOR DECK, REV A	990 A 0005 US, REV A	1
2	32983000	SUPPORT PLATE, MOTOR DECK		1
3	22120	PLUG, BWM, BIK		1
4	20031	WASHER, FENDER, 1/4 X 1 1/4		4
5	20039	WASHER, LOCK M6		6
6	20040	NUT HEX M6		6
7	50003	BOLT HEX, 1/2-13 X 1 1/4		4
8	50002	WASHER, LOCK 1/2"		4
9	96960980	RELIEF VALVE ASM, 2"		1
10	32923005	125MM SHEAVE, 14 GROOVE		1
11	329220105	BUSHING, PI, 1 3/8"		1
12	33068	PULLEY, POLY-V, 14 GROOVE, 48MM DIA		2
13	35015	BELT, 350L, 4 GROOVE, POLY-V		2
14	32827	NUT, HEX, LH, M12, 1 3/4"		2
15	32935	D52 MOTOR DECK GASKET 78"		1
16	60211C	CLAMP HOOK WELDMENT, MOTOR DECK	990 R 0036 US	2
17	8010	PLASTIC END CAP, 1" SQ		2
18	34817	SCREW US SOC HD M6 X 20		8
19	34876	M6 LOCK NUT		7
20	523149	SS STRAP FOR GROUNDING		2
21	34998	GROUND CONNECTOR		2
22	25000	WASHER EXT STAR 1/4"		3
23	31208	HEX BOLT, PARTIAL THREAD 5/16-18, 1 1/2"		2
24	31205	FLAT WASHER 5/16		2
25	31202	5/16-18 LOCK NUT		2
26	25029	RETAINER PIN		2
27	22220	TURBINE, 3 STAGE, 2.2 KW		2
28	35005	MOTOR, 7.5HP, 208-460, 3PH, BALDOR, NON-EX		2
29	60210C	DECK HOOK WELDMENT	000 R 0392 US	2
30	60210B	RETAINING BRACKET		1

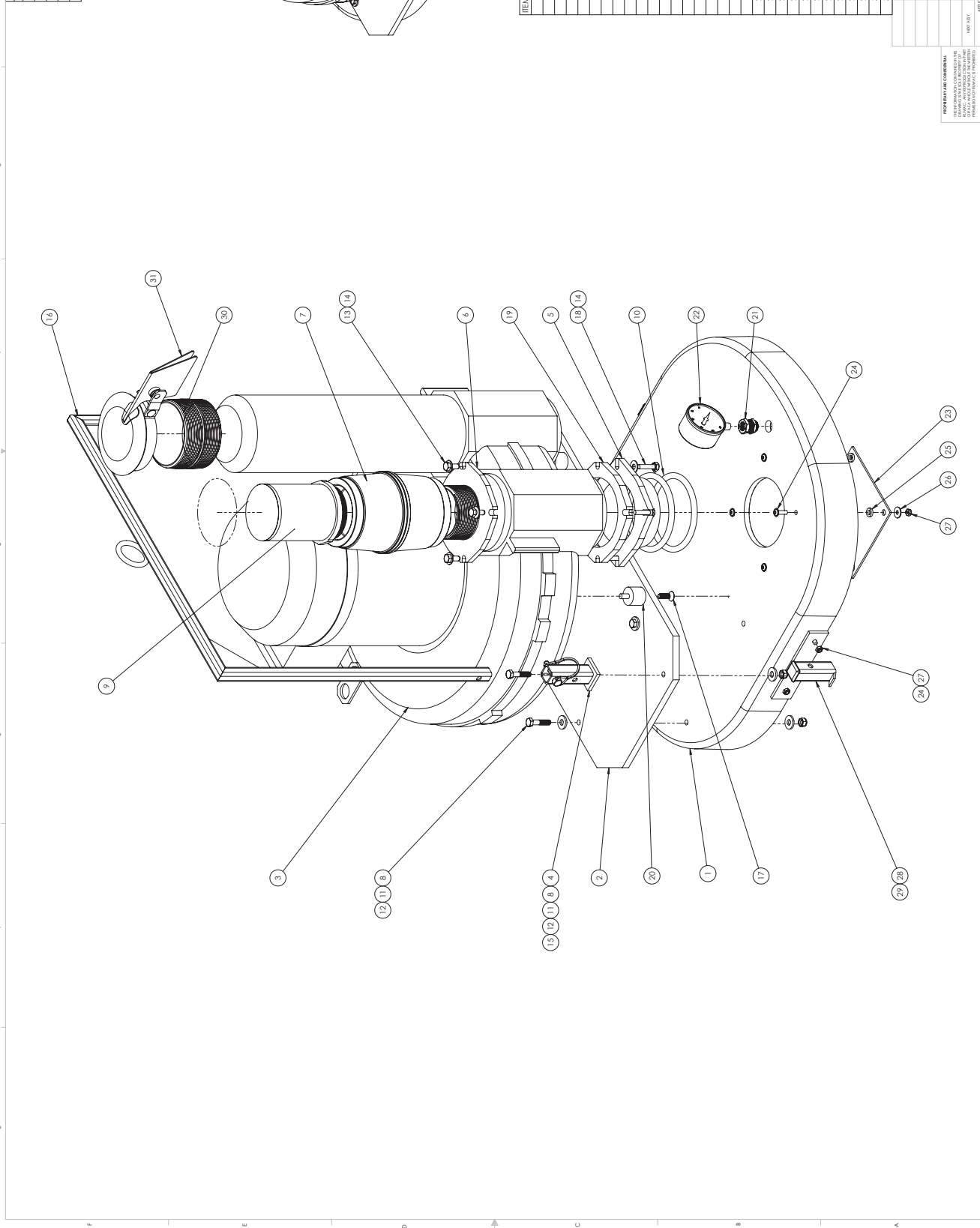
DATE	REV	DESCRIPTION	DATE	REV	DESCRIPTION

D52520 MOTOR DECK
 NON-EX
 SIZE DWG. NO. 000 E 0288 US
 SCALE: 1:8 W/EGRE: 1
 SHEET 1 OF 1

[illegible]

THE INFORMATION CONTAINED IN THIS DRAWING IS THE SOLE PROPERTY OF BUNAWAC. ANY REPRODUCTION IN PART OR AS A WHOLE WITHOUT THE WRITTEN PERMISSION OF BUNAWAC IS PROHIBITED.

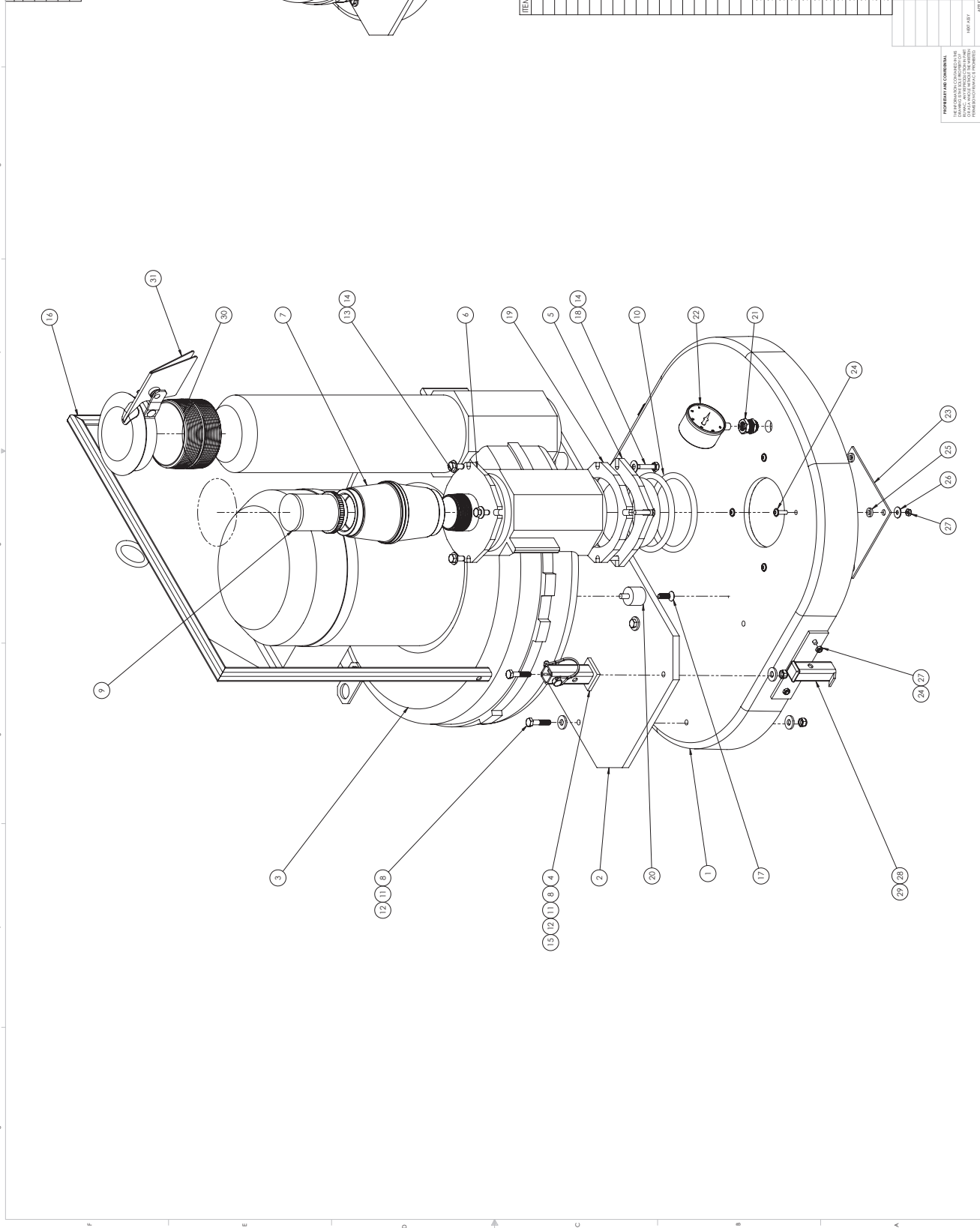
REV	DATE	NAME



ITEM NO.	PART NO.	DESCRIPTION	DRAWING NO.	QTY.
1	32871033	DS2 MOTOR DECK/ID	000 M 0240 US	1
2	45137701	REGN. VERT. MOUNT PLATE	000 R 0392 US	1
3	45140	VPK 100 1.5 HP. VERT. MOUNT		1
4	60210C	DECK MOUNT WELDMENT		2
5	45115-5	PK9 FLANGED TUBE CONNECTOR		1
6	45115-13	FLANGE CONNECTOR, K9-K10MS, 3IN. W/PT		1
7	94982	RELIEF VALVE, 3, ADJUSTABLE		1
8	31208	HEX BOLT, PARTIAL THREAD 5/16-18, 1 1/2"		6
9	10022	RELIEF VALVE SCREEN, 3INPT		1
10	2509802	GASKET, ROUND, 3/8", CUT AT 12.625"		2
11	31205	FLAT WASHER 5/16		10
12	31202	5/16-18 LOCK NUT		6
13	25038	BOLT HEX M8 X 20		4
14	34882	WASHER FLAT/THIN M8 ZINC		4
15	25029	RETAINER PIN		2
16	60210E	REMOVABLE LIFTING BAR	000 R 0458 US	1
17	2504370	SCREW FH M8 X 25, BLK OX		3
18	25031	BOLT HEX M8 X 30		4
19	45115-8	FLANGE SPACER, K9-K10MS	000 J 0007 US	1
20	91281	VIBRATION MOUNT M8		3
21	20062801	BULKHEAD 1/4" NPT		1
22	2006253	GAGE VACUUM 0-160"WC 2.5" DIA SS		1
23	2177702	PROTECTION SCREEN 6X6"		1
24	34817	SCREW US SOC HD M6 X 20		8
25	200432	NYLON WASHER/SPACER		4
26	34819	WASHER TENDER M6		4
27	34876	M6 LOCK NUT		8
28	60211C	CLAMP HOOK WELDMENT, MOTOR DECK	990 R 0036 US	2
29	8010	PLASTIC END CAP, 1 3/4		2
30	27702	NYLON WASHER/SPACER		1
31	80104	NIPPLE 1/4" COB. STEEL		1

TITLE		DATE		REV	
DS2 REGEN MOTOR DECK		45140ABV		REV	
VPK 100, 1.5HP, VERT MOUNT		45140ABV		REV	
SCALE: 1:2 (W/EGRE)		SHEET 1 OF 1		REV	

REV	DATE	NAME

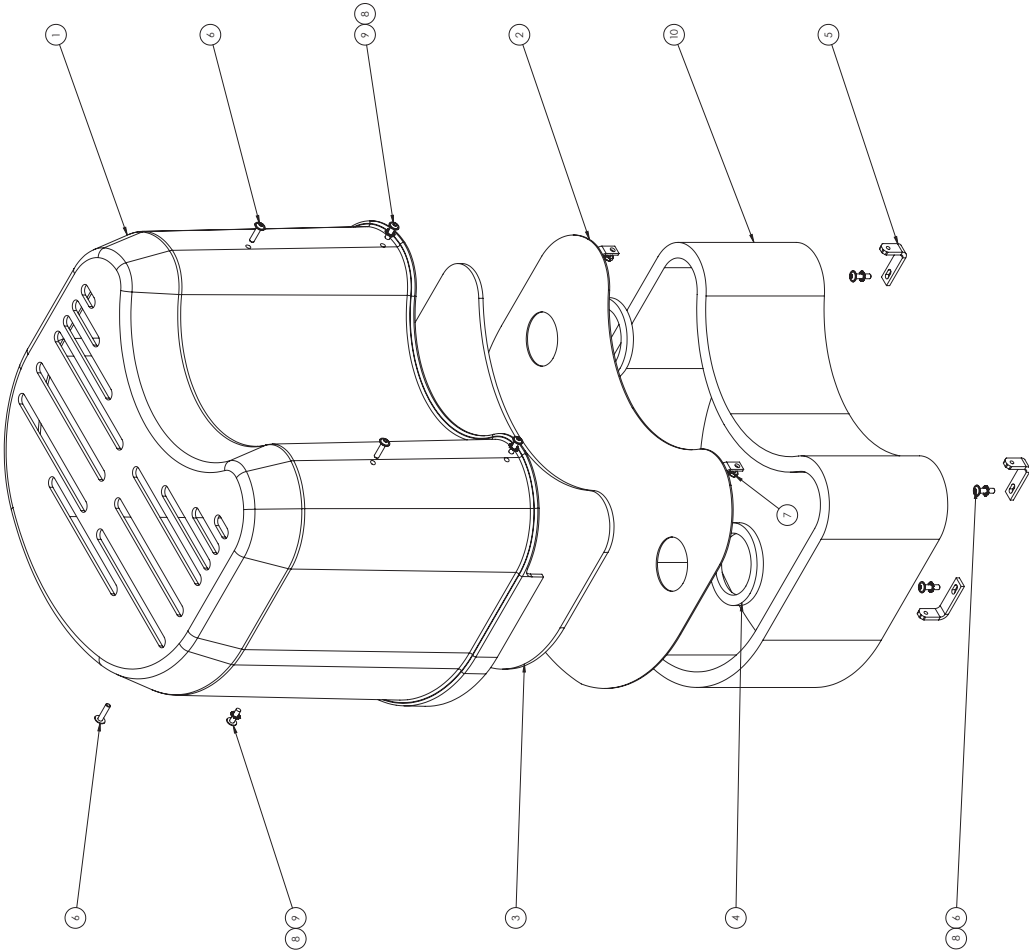


ITEM NO.	PART NO.	DESCRIPTION	DRAWING NO.	QTY.
1	32871003	DS2 MOTOR DECK/ID	000 M10240 US	1
2	45137101	REGN VERT MOUNT PLATE	000 M10240 US	1
3	45141	VPK 100, 20HP, DECK MOUNT	000 R10392 US	2
4	60210C	DECK MOUNT WELDMENT	000 R10392 US	1
5	45115-5	PH9 FLANGED TUBE CONNECTOR		1
6	45115-10	FLANGE CONNECTOR, K9-K10MS, 2IN W/PT		1
7	94981	RELIEF VALVE, 2, ADJUSTABLE		1
8	31208	HEX BOLT, PARTIAL THREAD 5/16-18, 1 1/2"		6
9	1002210	RELIEF VALVE, 2, SCREEN ADAPTER		1
10	2509802	GASKET, ROUND, 3/8", CUT AT 12.625"		2
11	31205	FLAT WASHER 5/16		10
12	31202	5/16-18 LOCK NUT		6
13	25038	BOLT HEX M8 X 20		4
14	34882	WASHER FLAT/THIN M8 ZINC		8
15	25029	RETAINER PIN		2
16	60210E	REMOVABLE LIFTING BAR	000 R10458 US	1
17	2504370	SCREW FH M8 X 25, BLK OX		3
18	25031	BOLT HEX M8 X 30		4
19	45115-8	FLANGE SPACER, K9-K10MS	000 J10007 US	1
20	91281	VIBRATION MOUNT M8		3
21	20062801	BULKHEAD 1/4" NPT		1
22	2006253	GAGE VACUUM 0-160"WC 2.5" DIA SS		1
23	2177702	PROTECTION SCREEN 6X6"		1
24	34817	SCREW US30C HD M6 X 20		8
25	200432	NYLON WASHER SPACER		4
26	34819	WASHER TENDER M6		4
27	34876	M6 LOCK NUT		8
28	60211C	CLAMP HOOK WELDMENT, MOTOR DECK	990 R10356 US	2
29	8010	PLASTIC END CAP, T 3Q		2
30	27720	NYLON WASHER		1
31	80144	NIPPLE 1/4" COB, STEEL		1

TITLE		DATE	
DESIGNED BY: J.F. 2/27/75		DRAWN BY: J.F. 2/27/75	
CHECKED BY: J.F. 2/27/75		APPROVED BY: J.F. 2/27/75	
PROJECT NO. 100-1000		SHEET NO. 1 OF 1	
COMPANY: RAYCO		SCALE: 1/2" = 1'-0"	
PROJECT NAME: DS2 REGN MOTOR DECK		PROJECT NO. 100-1000	
PROJECT LOCATION: VPK 100, 20HP, VERT MOUNT		PROJECT NO. 100-1000	
PROJECT DESCRIPTION: DS2 REGN MOTOR DECK		PROJECT NO. 100-1000	
PROJECT STATUS: IN PROGRESS		PROJECT NO. 100-1000	
PROJECT COMMENTS: 45141ABV		PROJECT NO. 100-1000	
PROJECT REVISIONS: 1		PROJECT NO. 100-1000	
PROJECT REVISIONS: 2		PROJECT NO. 100-1000	
PROJECT REVISIONS: 3		PROJECT NO. 100-1000	
PROJECT REVISIONS: 4		PROJECT NO. 100-1000	
PROJECT REVISIONS: 5		PROJECT NO. 100-1000	
PROJECT REVISIONS: 6		PROJECT NO. 100-1000	
PROJECT REVISIONS: 7		PROJECT NO. 100-1000	
PROJECT REVISIONS: 8		PROJECT NO. 100-1000	
PROJECT REVISIONS: 9		PROJECT NO. 100-1000	
PROJECT REVISIONS: 10		PROJECT NO. 100-1000	
PROJECT REVISIONS: 11		PROJECT NO. 100-1000	
PROJECT REVISIONS: 12		PROJECT NO. 100-1000	
PROJECT REVISIONS: 13		PROJECT NO. 100-1000	
PROJECT REVISIONS: 14		PROJECT NO. 100-1000	
PROJECT REVISIONS: 15		PROJECT NO. 100-1000	
PROJECT REVISIONS: 16		PROJECT NO. 100-1000	
PROJECT REVISIONS: 17		PROJECT NO. 100-1000	
PROJECT REVISIONS: 18		PROJECT NO. 100-1000	
PROJECT REVISIONS: 19		PROJECT NO. 100-1000	
PROJECT REVISIONS: 20		PROJECT NO. 100-1000	
PROJECT REVISIONS: 21		PROJECT NO. 100-1000	
PROJECT REVISIONS: 22		PROJECT NO. 100-1000	
PROJECT REVISIONS: 23		PROJECT NO. 100-1000	
PROJECT REVISIONS: 24		PROJECT NO. 100-1000	
PROJECT REVISIONS: 25		PROJECT NO. 100-1000	
PROJECT REVISIONS: 26		PROJECT NO. 100-1000	
PROJECT REVISIONS: 27		PROJECT NO. 100-1000	
PROJECT REVISIONS: 28		PROJECT NO. 100-1000	
PROJECT REVISIONS: 29		PROJECT NO. 100-1000	
PROJECT REVISIONS: 30		PROJECT NO. 100-1000	
PROJECT REVISIONS: 31		PROJECT NO. 100-1000	

DS2 REGN MOTOR DECK
 VPK 100, 20HP, VERT MOUNT
 45141ABV
 SCALE: 1/2" = 1'-0"
 SHEET 1 OF 1

REVISIONS		
REV	DESCRIPTION	DATE
A	E.C.O. # 1 HAS REVISED ASX UPDATED TO SH	8/13/15
		D.J.S.



ITEM NO.	PART NO.	DESCRIPTION	DRAWING NO.	QTY.
1	32869001	SILENCER HOOD DS2	990 3 0003 US	1
2	32917000	FIBERGLASS MAT DIFFUSER DS2 HOOD, BLUE	990 3 0003 US	1
3	32914000	GASKET, 4" ODK 3" IDX 3/8" THICK	000 R 0158 US	2
4	2329812	BRACKET DS2 HOOD	000 R 0158 US	2
5	32872000	SCREW, SOC BH FLANGED, M6-25		6
6	3481701	M6 LOCK NUT		6
7	25000	WASHER EX STAINL 1/4"		3
8	3481701	SCREW US 1/4" X 1/4"		3
9	32918000	FOAM DZ SILENCER HOOD		1
10	32918000	FOAM DZ SILENCER HOOD		1

DATE	01.11.15	BY	J.S.	CHKD	J.S.	DATE	01.11.15	BY	J.S.	CHKD	J.S.
TITLE											
DIFFUSER ASM, DS2 EX											
SIZE DWG. NO.											
D 990 E 0007 US											
SCALE: 1:3											
SHEET 1 OF 1											

FOR INFORMATION ONLY
THIS INFORMATION IS FOR
YOUR INFORMATION ONLY
IT IS NOT A CONTRACT
AND IS NOT A WARRANTY
OF ANY KIND

DATE	01.11.15	BY	J.S.	CHKD	J.S.	DATE	01.11.15	BY	J.S.	CHKD	J.S.
TITLE											
DIFFUSER ASM, DS2 EX											
SIZE DWG. NO.											
D 990 E 0007 US											
SCALE: 1:3											
SHEET 1 OF 1											

